



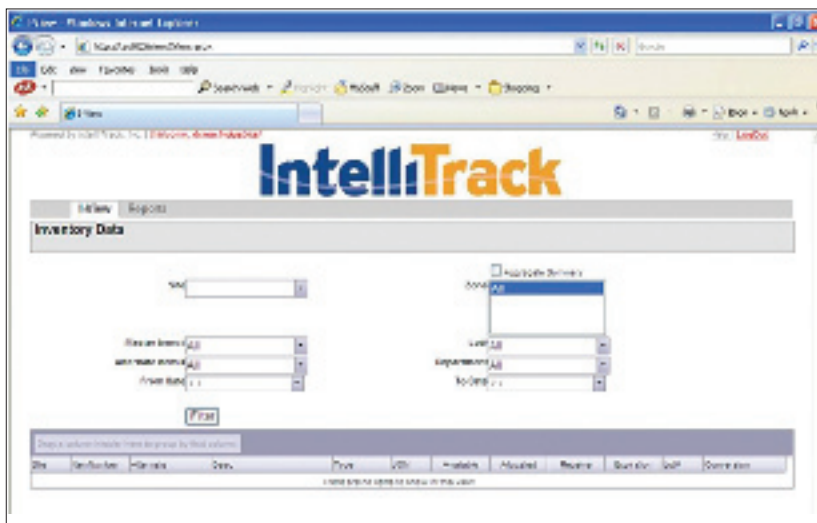
Overview

IntelliTrack I-View provides an instant look into your inventory through a secure online environment. With I-View, you are able to view current inventory levels at any of your warehouses or locations. View on hand inventory, expected receipts, and receiving & picking orders through the web.

I-View's Online Warehouse Features:

- **Inventory View** - Shows real-time "on-hand" inventory within a warehouse, location, or multiple warehouses with several ways to filter data. Know what is scheduled to ship out and what orders are due into the warehouse.
- **Reports** - Create and view reports online. I-View reports include Error Log reports, Open Purchase Orders, Open Sales Orders, and On Hand Inventory levels.

I-View shows real-time inventory within a warehouse:



In the primary view, user information is provided for:

- Site
- Item number & alternate number
- Description
- Type of item, or category
- Unit of measure (UOM)
- Number available, or on hand inventory
- Quantity allocated to a picking order
- Expected receipts that are in the system
- Expiration date
- Lot number
- Conversion, field for an alternate unit of measure

System Requirements

Component	Requirement
Computer & Processor	2.0 gigahertz (GHz) minimum
Memory	512 megabyte (MB) RAM; 1 gigabyte (GB) RAM or higher if running SQL and IntelliTrack software on same computer
Hard Disk	At least 3 gigabyte (GB) or higher free disk space available
Drive	CD-ROM or DVD drive
Display	1024x768 or higher resolution monitor
Operating System	32-bit Only: Microsoft Windows XP with Service Pack (SP) 2 or higher, Windows Server 2003 with Service Pack (SP) 2 or higher 32-bit and 64-bit: Windows Vista Home Premium, Vista Business, Vista Ultimate, Windows 7 Home Premium, Windows 7 Professional, Windows 7 Ultimate, Windows Server 2008
Batch Mode	<ul style="list-style-type: none"> • Internet Information Services (IIS) • Microsoft ActiveSync 4.5 on Windows XP, Windows Server 2003 • Mobile Device Center 6.1 on Vista, Windows 7, and Windows Server 2008 • Active network card
Other	SQL 2005, SQL 2005 Express, SQL 2008, SQL 2008 Express
	If using the full version of Microsoft Access: 2007 Office Suite Service Pack (SP) 1 or higher
	Visit the hardware support matrix at www.intellitrac.net for a list of certified mobile computers.

IntelliTrack I-View

IntelliTrack I-View is available with any IntelliTrack WMS application.

IntelliTrack Warehouse Management Software (WMS) comes in three cost effective versions ranging in price and features. Developed with scalability in mind, the IntelliTrack WMS product line includes Inventory, Shipping, Receiving, and Picking (ISRP), WMS RF, and WMS RF Professional.

I-View allows you to view on hand inventory in your IntelliTrack WMS or ISRP system at any time. WMS & ISRP are designed to maintain inventory in a variety of business environments. This user friendly inventory tracking system combines state-of-the-art barcode data collection on your portable barcode terminal, with a sophisticated Windows based management program for your PC.

IntelliTrack WMS software applications include:

- IntelliTrack ISRP (Inventory, Shipping, Receiving, & Picking)
- IntelliTrack WMS RF
- IntelliTrack WMS RF Professional

I-View also supports IntelliTrack's third party logistics add on module:

- IntelliTrack 3PL software

Available in 3 Versions:

ISRP

- Paperless Receiving
- Serial Numbers
- Multiple UOM & Let Downs
- Inquiries
- Move/Transfers
- Physical Inventory
- Cycle Counting
- Kitting

WMS RF Standard

(Includes ISRP features)

- Terminal Messaging
- RF Portable Application

WMS RF Professional

(Includes ISRP & RF features)

- Sequenced Pick & Put Away
- Pallet Tracking
- Basic Cubing
- Replenishment
- Zone Picking

IntelliTrack 3PL Software provides advanced supply chain management for third party logistics providers. IntelliTrack 3PL is added on to the WMS or ISRP application to provide important features involved with managing multiple customers and their inventory. Valuable features include task management, advanced billing and tracking options, multi customer support, customer profiling and reporting services.

IntelliTrack WMS/ISRP-Matrix Feature/Product	ISRP	WMS RF Standard	WMS RF Professional
Batch portable data collection terminal Application	•	•	•
Cycle Counting	•	•	•
Inquiries	•	•	•
Inventory Moves & Transfers	•	•	•
Multiple Units of Measure	•	•	•
Paperless Picking & Receiving	•	•	•
Physical Inventory	•	•	•
SQL Server Capable	•	•	•
Serial Numbers	•	•	•
Source Code (Optional)	•	•	•
Supports Plug-Ins through WIA	•	•	•
Integrates with QuickBooks	•	•	•
Staging		•	•
Portable data collection terminal Bar Code printing		•	•
Terminal Messaging		•	•
RF (WiFi) portable data collection terminal application		•	•
Cross Dock Notification			•
Cubing (Space Management)			•
Sequenced Pick & Put away			•
Kitting	•	•	•
Pallet Tracking		•	•
Replenishment			•
Wave Picking (Batched Orders)			•
Zone Picking			•