



3PL: Third Party Logistics for WMS

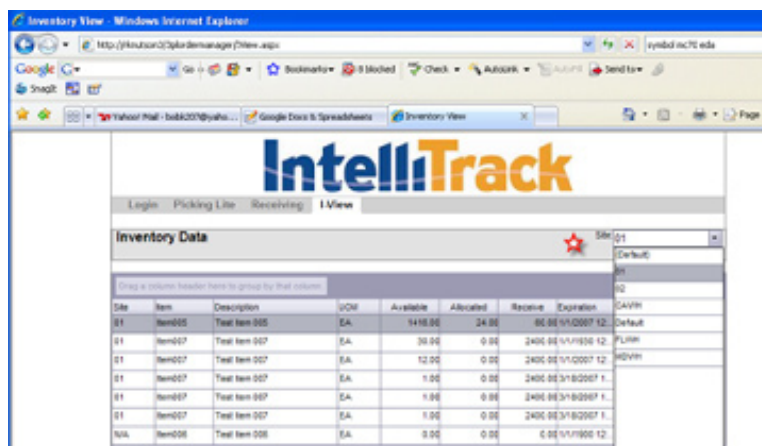
Overview

The IntelliTrack WMS software provides advanced supply chain management for 3PL service providers. With all the benefits of IntelliTrack® WMS software for reliable warehouse management, 3PL offers important features involved with managing multiple customers and their inventory.

IntelliTrack 3PL allows service providers to manage multiple clients' inventory from a single warehouse location. Your clients are able to monitor their entire inventory at various warehouse sites or a specific location through a secure website. In addition, 3PL provides multi customer support and customer profiling features, including the ability to create customer and sub-customer relationships.

IntelliTrack 3PL software includes sophisticated billing features including special handling charges, custom ancillary charges, and billing for specific environments and tasks in the warehouse.

By using IntelliTrack 3PL software you will not only develop warehouse efficiency, you will improve communications between your clients, staff, and daily tasks involved in running a successful warehouse.



3PL is designed to let clients view, track, and create sales and purchase orders on their inventory at any time through a secure online environment.

System Requirements

Component	Requirement
Computer & Processor	2.0 gigahertz (GHz) minimum
Memory	512 megabyte (MB) RAM; 1 gigabyte (GB) RAM or higher if running SQL and IntelliTrack software on same computer
Hard Disk	At least 3 gigabyte (GB) or higher free disk space available
Drive	CD-ROM or DVD drive
Display	1024x768 or higher resolution monitor
Operating System	32-bit Only: Microsoft Windows XP with Service Pack (SP) 2 or higher, Windows Server 2003 with Service Pack (SP) 2 or higher 32-bit and 64-bit: Windows Vista Home Premium, Vista Business, Vista Ultimate, Windows 7 Home Premium, Windows 7 Professional, Windows 7 Ultimate, Windows Server 2008
Batch Mode	<ul style="list-style-type: none"> Internet Information Services (IIS) Microsoft ActiveSync 4.5 on Windows XP, Windows Server 2003 Mobile Device Center 6.1 on Vista, Windows 7, and Windows Server 2008 Active network card
Other	SQL 2005, SQL 2005 Express, SQL 2008, SQL 2008 Express If using the full version of Microsoft Access: 2007 Office Suite Service Pack (SP) 1 or higher
Visit the hardware support matrix at www.intellitrac.net for a list of certified mobile computers.	

3PL: Third Party Logistics for WMS

The IntelliTrack WMS software serves as a base for the warehouse management functionality within the IntelliTrack 3PL system.

IntelliTrack WMS software comes in three cost effective versions ranging in price and features. Developed with scalability in mind, the IntelliTrack WMS product line includes Inventory, Shipping, Receiving, and Picking (ISRP), WMS RF, and WMS RF Professional.

Available in 3 Versions:

ISRP

- Paperless Receiving
- Serial Numbers
- Multiple UOM & Let Downs
- Inquiries
- Move/Transfers
- Physical Inventory
- Cycle Counting
- Kitting

WMS RF Standard

- (includes Standard Batch features)
- Terminal Messaging
 - RF Portable Application

WMS RF Professional

- (includes Standard Batch & RF features)
- Sequenced Pick & Put Away
 - Pallet Tracking
 - Basic Cubing
 - Replenishment
 - Zone Picking

Barcode Printing:

Integrated barcode printing allows you to label your inventory and locations quickly and easily based on the data contained in your IntelliTrack application. Portable data terminal support and barcode labels maximize data accuracy and efficiency when collecting inventory information.

Easy to Use:

IntelliTrack is a user-friendly Windows application. Easy menu navigation allows you to quickly perform common inventory tasks. Because it is a Windows® application, IntelliTrack's user interface will be familiar to anyone who is accustomed to working in this environment.

IntelliTrack 3PL: Third Party Logistics Software	ISRP	WMS RF Standard	WMS RF Professional
Feature/Product			
TASK MANAGEMENT Collect billable activities against specific on floor activities such as: Receiving, Put-Away, Move, Inventory, and Picking.	•	•	•
SINGLE WAREHOUSE Supports a single warehouse environment, manage multiple customers from one warehouse.	•	•	•
CUSTOMER PROFILE Create customer profiles by customer profiles by customer and customer's customer.	•	•	•
BILLING Layered billing criteria that include: Flat charges, Item level charges, Handling charges, and Invoice generation.	•	•	•
WEB SERVICES Web enabled modules to allow customer interaction include: Inventory view, Shipping, Receiving, Order management, and Reports.	•	•	•
ANCILLARY CHARGES Custom charges created through the 3PL module that is available through the RF terminal.		•	•
SPECIAL HANDLING Special handling functions available through the RF terminal include: Receive to Pallet and Pallet Tracking, Pallets visible to customer, and time of billing by activity.		•	•